

(3)

2021'N'

Group 'A'

Rewrite the correct options of each questions in your answer sheet. 6x1=6

12. Which of the following tissues possess fat globules ?
A) Areolar tissue
B) Adipose tissue
C) Blood plasma
D) Striped muscle
13. What are the sequential steps involved in process of gametogenesis ?
A) Multiplication, growth, maturation
B) Multiplication, maturation, growth
C) Growth, multiplication, maturation
D) Maturation, growth, multiplication
14. When an organ transplantation occurs between two genetically identical individuals, what will be the type of transplantation among following ?
A) Auto graft
B) Allograft
C) Heterograft
D) Iso graft
15. Over population causes adverse consequences in the society. Highlight which of the following can control over population ?
A) Early marriage
B) Polygamy
C) Family planning
D) Food supply
16. In the middle ear of human being, there are three ear-ossicles. Identify and select which of the following ear-ossicles are arranged in correct sequence ?
A) Malleus, Incus, Stapes
B) Malleus, Stapes, Incus
C) Cochlea, Incus, Malleus
D) Malleus, Incus, Saccule
17. Pancreas is a gland having exocrine and endocrine in functions. Its exocrine part is the pancreatic acini. What would be the endocrine part ?
A) Zona glomerulosa
B) Islet of Langerhans
C) Zona reticularis
D) Adenohypophysis

(Contd...)

2021'N'

(4)
Group 'B'

Short answer questions.

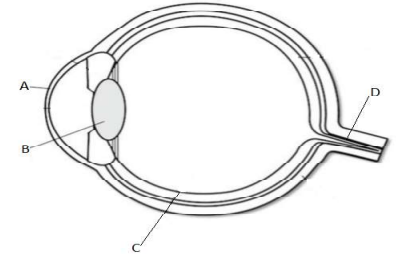
4x4=16

18. How would you elaborate the different types of simple epithelial tissues in animals ? Support with diagrams. 3+1
19. Describe the process of oogenesis in animals with diagram. 3+1

OR

Define the term *in-vitro* fertilization. Describe its process.

20. Study the given diagram of V.S. of human eye and answer the following questions. 2+2



- a) Label A, B, C, and D
b) Write one function each of the part labelled.

21. Kidneys are the organs which filter the blood to remove the wastes and keep the electrolyte in balance. If the kidneys do not function normally, various renal disorders are observed. Highlight any two common renal disorders in human beings. 4

Group 'C'

Long answer questions.

2x8=16

22. Explain cholera as an acute diarrhoeal disease. Discuss its causative agent, mode of transmission and symptoms. Mention its control measures. 1+1+2+2+2
23. Draw a labelled diagram of alimentary canal of a human being. How would you explain the digestion of proteins in gut ? Justify the relationship between amylase and lipase enzymes in digestion of food. 3+4+1

OR

Justify the statement "sino-auricular node is a natural pacemaker." What would you suggest if the natural pacemaker does not function normally ? How do you test blood grouping in human beings ? 3+2+3

-0-